



ISO 9001 : 2015



Company Profile



L.P.S.INDUSTRY CO.,LTD is the leading metal stamping parts and components manufacturer for automotive industrial which have been operating by experienced and knowledge based executives in metal stamping parts and components market. We are widely accepted from customers in term of products and services quality.

Address : 108/2 Moo.7 Tambon.Klongmadue, Kratumban,
Samutsakorn 74110

Tel : 034-446 467 , 034-446 468

Fax : 034-446 469

e-mail : l.p.s.industry@gmail.com

Website : www.lpsindustry.co.th

Date Established : 6 January 2015

Business Type : Stamping Metal and Poly-Urethane Molding

Company Policy : To satisfy customer needs by providing quality products and services, on time delivery and continuous development.

ISO 9001 : 2015



Company Profile



No. of Employee : 51 persons

Capital : 20 million baht.

Factory Size : 5 Rai

Customer Market : 100 % Domestic Market.

Certification : ISO 9001 : 2015



Contact : Mr. Somkieat Limkawinwong
Mrs. Supa limkawinwong
Mr. Rangsan Sriworlakkhana

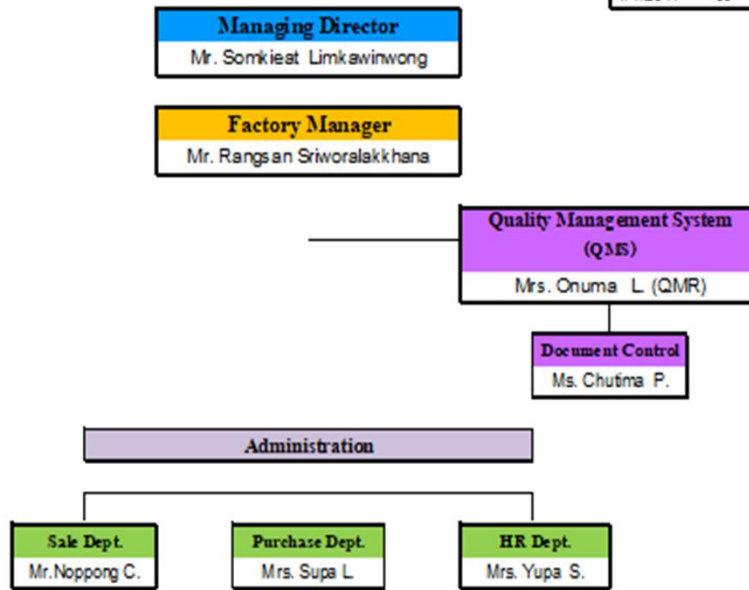
ORGANIZATION CHART



ORGANIZATION CHART: Administration



Date	Rev.	Issued	Checked	Approved
4/1/2017	00			



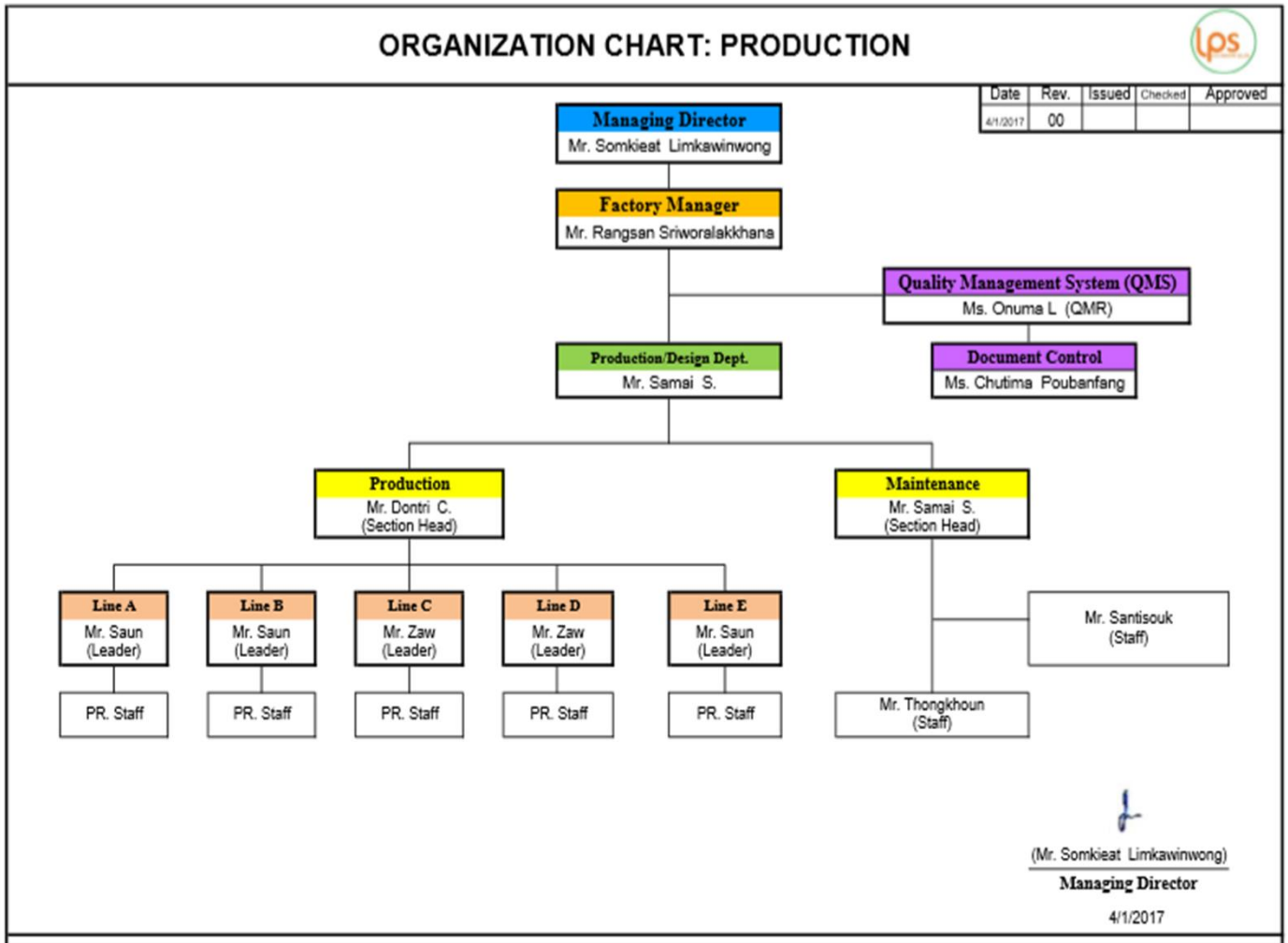

 (Mr. Somkiat Limkwinwong)
 Managing Director
 4/1/2017

ISO 9001 : 2015





ORGANIZATION CHART : Production

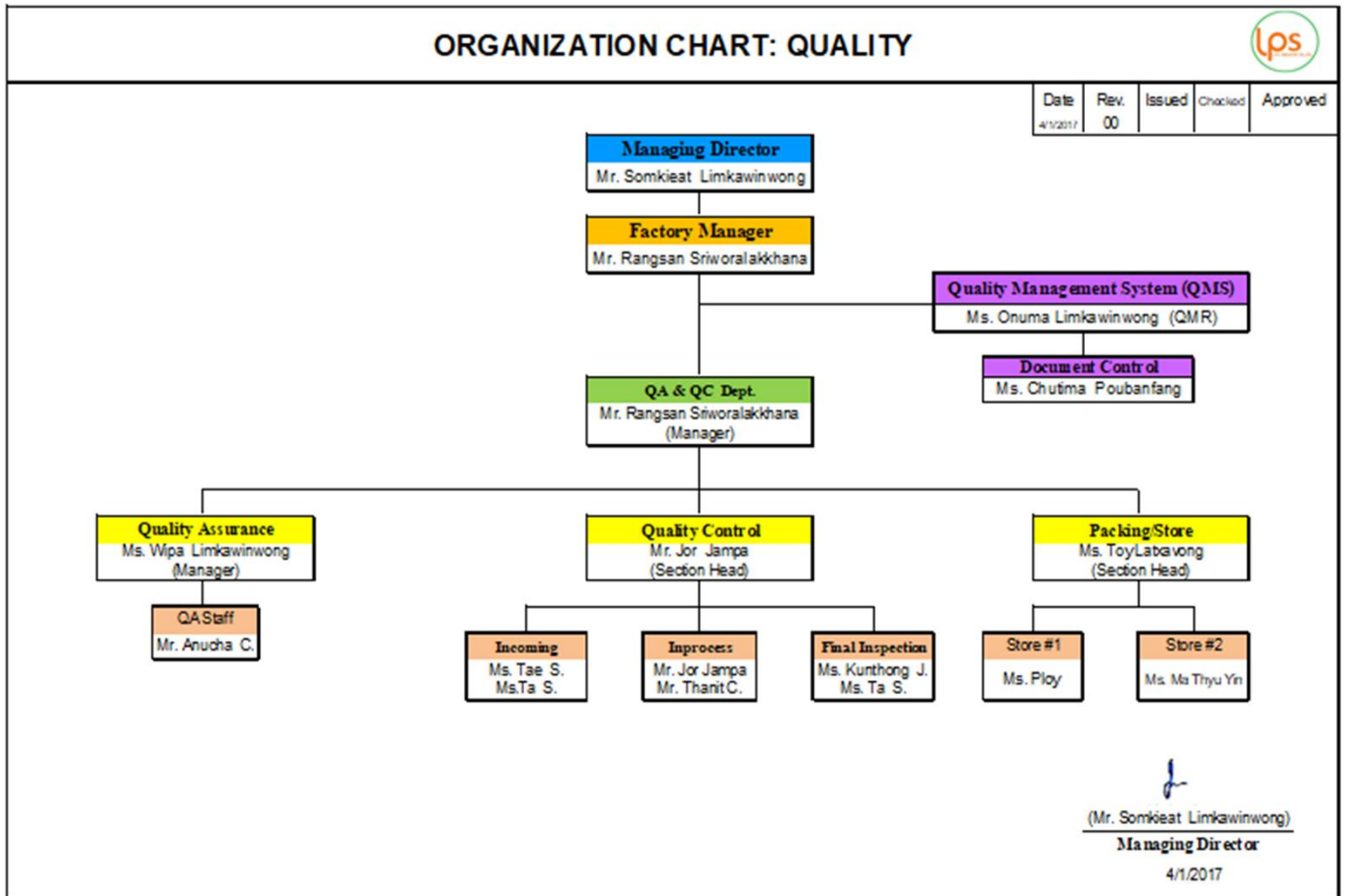


ISO 9001 : 2015





ORGANIZATION CHART : Quality



ISO 9001 : 2015



Customers List.



1. Thai Steel Cable Public Company Limited.
2. Complete Auto Rubber Manufacturing Company Limited.
3. SL Worldwide Products Company Limited.
4. Bunyat Industry 1998 Company Limited.
5. Timeng Ltd.,Part
6. Thepsongsern Company Limited.
7. P-QUALITY Company Limited.
8. Shinmaywa Company Limited. (Japan)
9. Sammitr Motors Manufacturing Public Company Limited.
10. Siam PP Tech Company Limited.

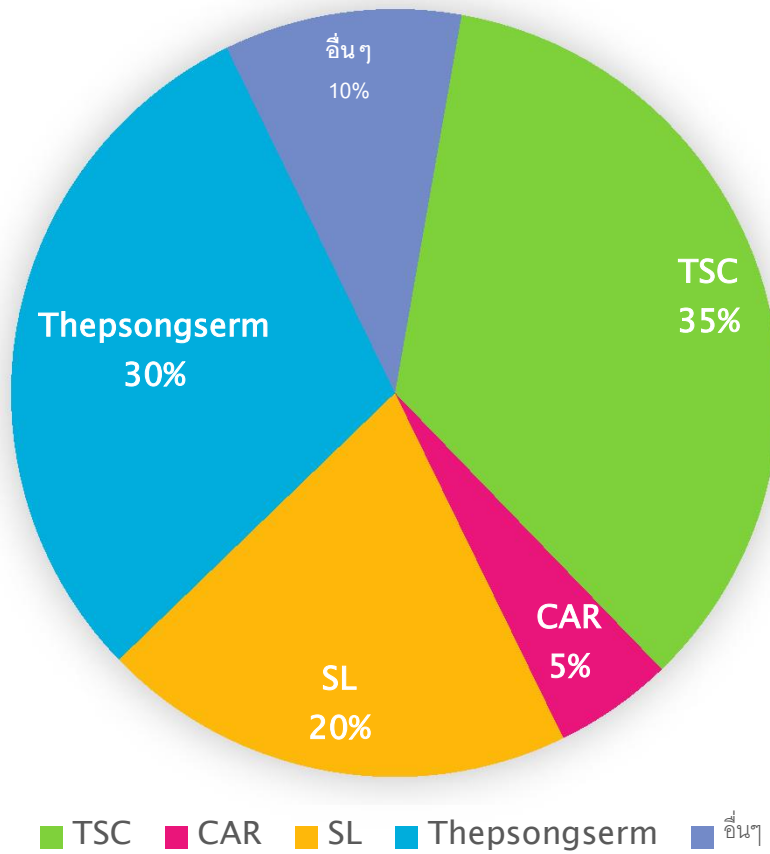
ISO 9001 : 2015



Customers Sales Ratio (%)



Sales



ISO 9001 : 2015





1. Thai Steel Cable Public Company Limited (TSC)

Metal Stamping Products



ISO 9001 : 2015



2. Complete Auto Rubber Manufacturing Co.,Ltd (CAR)



Metal Stamping Products



ISO 9001 : 2015





3. SL Worldwide Product Co.,Ltd (SL)

Metal Stamping Products



ISO 9001 : 2015



4. Thepsongserm Co.,Ltd



Caster Products



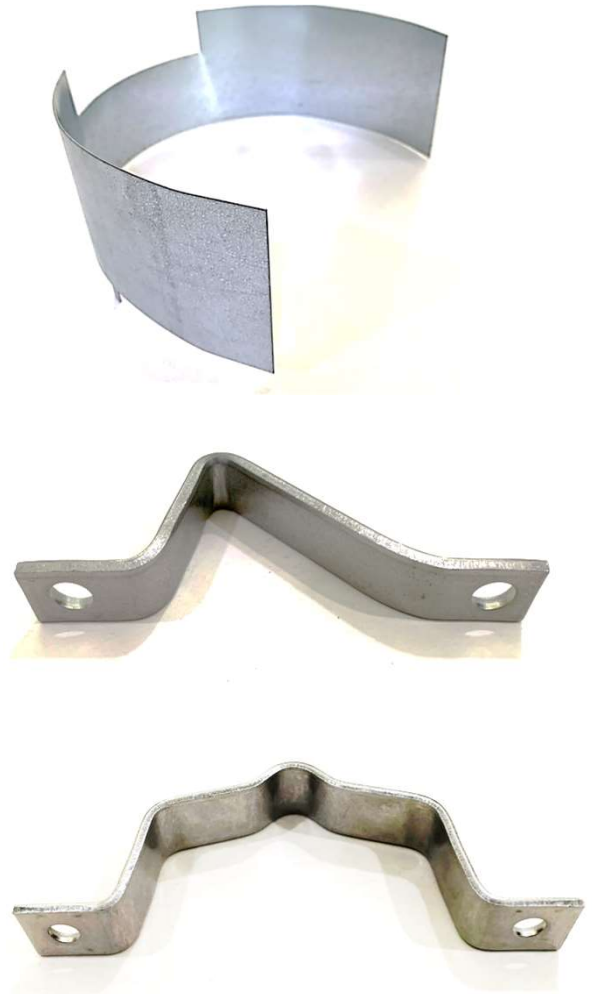
ISO 9001 : 2015



8. Shinmaywa Company Limited. (Japan)



Metal Stamping Products



ISO 9001 : 2015





METAL STAMPING PRODUCT.



ISO 9001 : 2015





METAL STAMPING PRODUCT.



ISO 9001 : 2015





METAL STAMPING PRODUCT.



ISO 9001 : 2015





METAL STAMPING PRODUCT.



ISO 9001 : 2015



Pictures of Factory



ISO 9001 : 2015

Pictures of Factory



เครื่อง CMM สามารถวัดชิ้นงานขนาด
(800x2000x700 mm.) ได้

WENZEL®

Co-ordinate Measuring Machines LH 108,



ISO 9001 : 2015

Equipments List.



1. Press Machine 300 Ton	QTY.	1	machine
2. Press Machine 250 Ton	QTY.	1	machine
3. Press Machine 150 Ton	QTY.	3	machines
4. Press Machine 120 Ton	QTY.	1	machine
5. Press Machine 100 Ton	QTY.	3	machines
6. Press Machine 80 Ton	QTY.	3	machines
7. Press Machine 60 Ton	QTY.	4	machines
8. Press Machine 45 Ton	QTY.	2	machines
9. Press Machine 35 Ton	QTY.	19	machines
10. Press Machine 25 Ton	QTY.	4	machines
11. Press Machine 20 Ton	QTY.	3	machines
12. Press Machine (AMADA) 110 Ton	QTY.	1	machine
13. Press Machine (AMADA) 80 Ton	QTY.	1	machine
14. Press Machine (AMADA) 60 Ton	QTY.	3	machines
15. Press Machine (AMADA) 45 Ton	QTY.	1	machine
16. Press Machine (AMADA) 35 Ton	QTY.	1	machine
17. Hydraulics Machine 150 Ton	QTY.	1	machine
18. Milling Machine	QTY.	1	machine
19. Lathe Machine	QTY.	3	machines
20. Screed Machine	QTY.	1	machine
21. Drills Machine	QTY.	1	machine
22. Surface Planers Machine	QTY.	1	machine

ISO 9001 : 2015



Equipments List.



23. Blind Rivet Machine	QTY.	1	machine
24. Electric Welding Machine	QTY.	3	machines
25. Co ² Machine	QTY.	3	machines
26. Argonne Machine	QTY.	1	machine
27. Spot Machine	QTY.	2	machines
28. Steel Sawing Machine	QTY.	1	machine
29. Surface Grinders Machine	QTY.	2	machines
30. Drill Machine	QTY.	3	machines
31. "KEASER" Rotary Air Pump Machine	QTY.	1	machine
32. "KOBELCO" Rotary Air Pump Machine	QTY.	1	machine
33. Air Pump Machine	QTY.	2	machines
34. Blasting Machine	QTY.	1	machine
35. Heat Oven Temperature to 400 degrees	QTY.	1	machine
36. Heat Oven Temperature to 200 degrees	QTY.	4	machines
37. Polishing Machine	QTY.	1	machine
38. Threading Machine	QTY.	1	machine
39. A Circular Pipe Cutter	QTY.	1	machine

ISO 9001 : 2015





Thank You

ISO 9001 : 2015

